



**BASIC AMERICAN**  
**MEDICAL PRODUCTS**  
 A Graham-Field Brand

2935 Northeast Parkway • Atlanta, Georgia 30360  
 T: 770.368.4700

PRESENTS

# ORGANIC OASIS



## ORGANIC OASIS



CRYPTON® SEATING FABRICS

	Content	Weight	Finish / Backing	Directional / Railroaded	Repeat	Abrasion	Flammability
<b>Essence</b>	64% Polyester, 36% Acrylic	13.9 oz	Crypton®	Yes / No	N / A	50,000 Double Rubs	California Bulletin 117-E NFPA 260 Class 1 UFAC Class 1
<b>Guru</b>	53% Acrylic, 47% Polyester	14.9 oz	Crypton®	Yes / No	H - 3.625" V - 3.625"	50,000 Double Rubs	California Bulletin 117-E NFPA 260 Class 1 UFAC Class 1
<b>Nirvana</b>	51% Acrylic, 49% Polyester	14.9 oz	Crypton®	Yes / No	H - 2.875" V - 2.0"	50,000 Double Rubs	California Bulletin 117-E NFPA 260 Class 1 UFAC Class 1
<b>Peace</b>	51% Acrylic, 49% Polyester	14.4 oz	Crypton®	Yes / No	H - 14.625" V - 8.4375"	50,000 Double Rubs	California Bulletin 117-E NFPA 260 Class 1 UFAC Class 1
<b>Retreat</b>	51% Acrylic, 49% Polyester	15.6 oz	Crypton®	Yes / No	H - 14.75" V - 13.5"	50,000 Double Rubs	California Bulletin 117-E NFPA 260 Class 1 UFAC Class 1

Roll Width - 54"

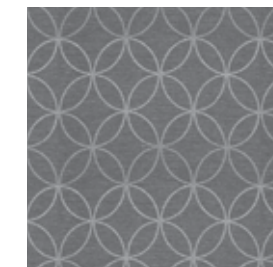
All patterns in this collection meet or exceed ACT® Performance Guidelines.



Each fiber of a Crypton® fabric is permanently encapsulated to resist stains, fungus, bacteria and mildew. Crypton's breathable moisture barrier is integrated into the fabric, ensuring permanent protection. Crypton® Super Fabrics are engineered to be extremely easy to clean, allowing spots and spills to be easily removed with soap and water.

© 2008 Crypton, Inc. All rights reserved. Crypton and the red planet logo are registered trademarks of Crypton, Inc. U.S. Patents 5,565,265, 5,747,392, 6,024,823, 6,165,920, 6,207,250, 6,251,210, 6,492,001, 6,541,138 and 6,884,491. Other U.S. and international patents pending.

**Guru**



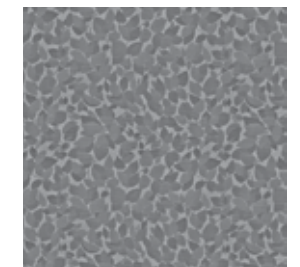
Multiple repeats shown.  
 Actual repeat is H - 3.625" and V - 3.625"

**Peace**



Multiple repeats shown.  
 Actual repeat is H - 14.625" and V - 8.4375"

**Retreat**



Multiple repeats shown.  
 Actual repeat is H - 14.75" and V - 13.5"



**BASIC AMERICAN**  
**MEDICAL PRODUCTS**  
 A Graham-Field Brand

2935 Northeast Parkway • Atlanta, Georgia 30360  
 T: 770.368.4700

## RETREAT



1006798 Harvest



1006800 Mineral



1006799 Auburn



1006796 Pool



1006795 Mojave

## GURU



1006911 Sunrise



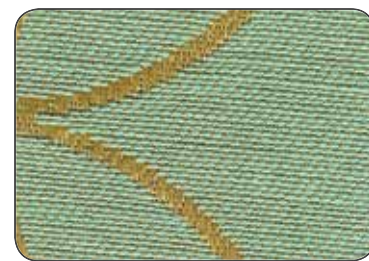
1006907 Sand Dollar



1006910 Haze



1006909 Sky



1006908 Sea Foam



1006916 Burnt Orange



1006913 Chestnut

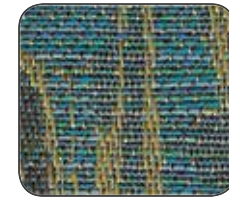


1006914 Aubergine

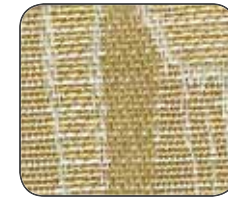
## PEACE



1006828 Gingersnap



1006826 Blueberry



1006823 Wheat



1006827 Iris



1006825 Lagoon



1006824 Mushroom



1006829 Charcoal

## ESSENCE



1006786 Honey



1006788 Moss



1006793 Coffee



1006794 Eclipse



1006786 Honey



1006792 Terra Cotta



1006790 Plum



1006785 Smoke



1006784 Tumbleweed



1006789 Calypso

## NIRVANA



1006812 Amber



1006808 Sugar



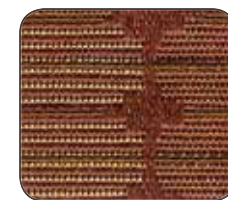
1006809 Caramel



1006811 Dew



1006815 Chocolate



1006813 Rustic



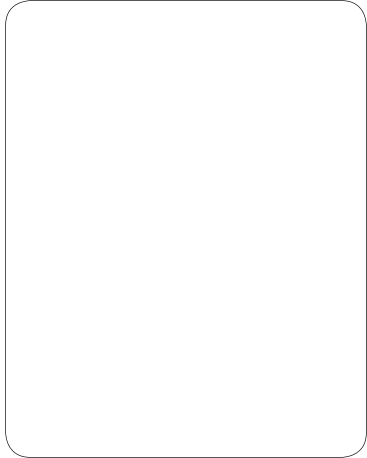
1006814 Wine



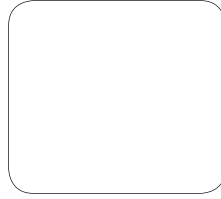




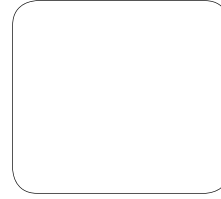
## PEACE



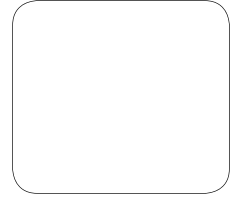
1006828 Gingersnap



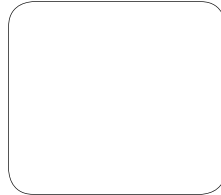
1006826 Blueberry



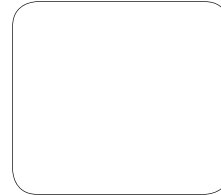
1006823 Wheat



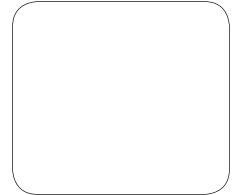
1006827 Iris



1006825 Lagoon

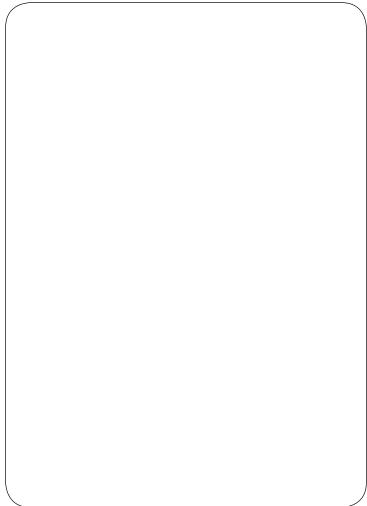


1006824 Mushroom



1006829 Charcoal

## ESSENCE



1006786 Honey



1006788 Moss



1006793 Coffee



1006794 Eclipse



1006786 Honey



1006792 Terra Cotta



1006790 Plum



1006785 Smoke

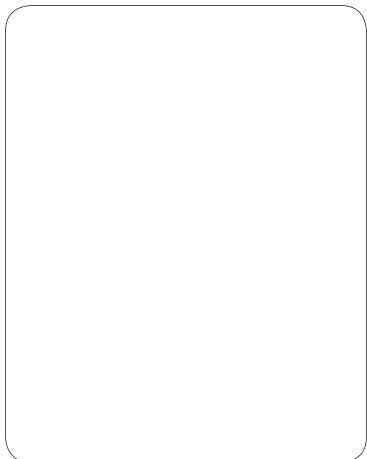


1006784 Tumbleweed

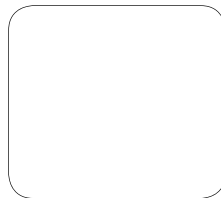


1006789 Calypso

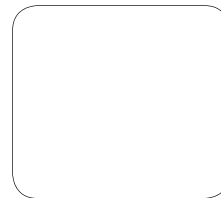
## NIRVANA



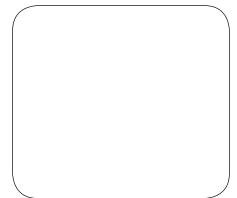
1006812 Amber



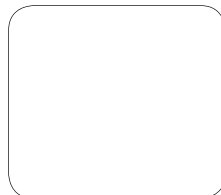
1006808 Sugar



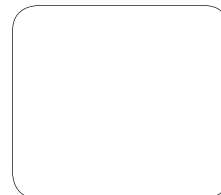
1006809 Caramel



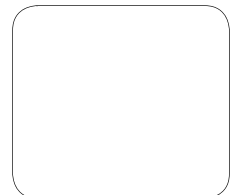
1006811 Dew



1006815 Chocolate



1006813 Rustic



1006814 Wine