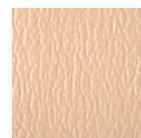


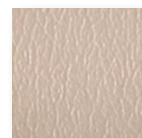
Patriot Plus



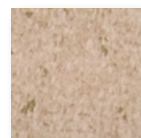
PAT-427 Blueridge



PAT-8504 Sand



PAT-8602 Oatmeal



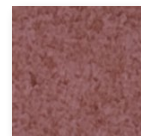
TWI-851 Doe Skin



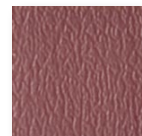
PAT-8604 Concrete



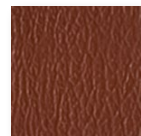
PAT-8567 Dove



TWI-863 Rosewood



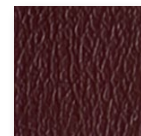
PAT-8561 Mulberry



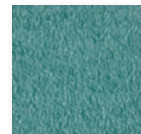
PAT-8611 Terra Cotta



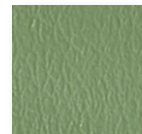
PAT-8615 Berry



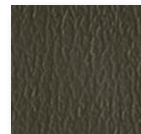
PAT-8533 Port



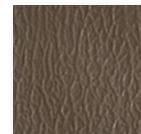
TWI-857 Jade



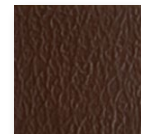
PAT-8624 Granny Smith



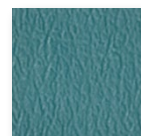
PAT-8626 Eucalyptus



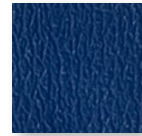
PAT-8584 Taupe



PAT-8516 Chestnut



PAT-8628 Sea

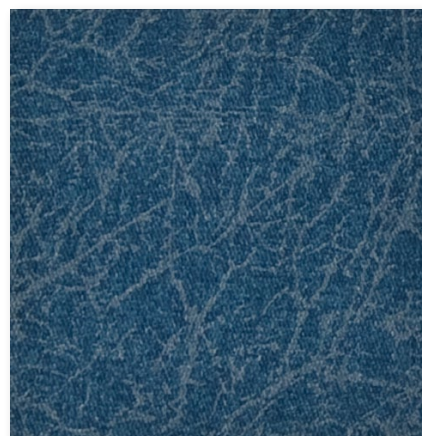


PAT-454 Royal Blue

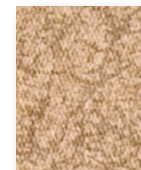


PAT-432 Imperial Blue

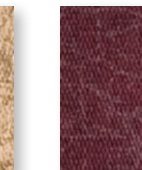
Renaissance



REN-9214 Steel Blue



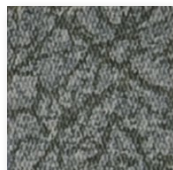
REN-9205 Gypsum



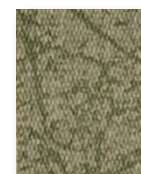
REN9208 Wineberry



REN-9202 Periwinkle



REN-9201 Cobblestone



REN-9210 Cypress



REN-9212 Bluejade



REN-9207 Ice Blue

Savoy



SAV-401 Vintage Gold



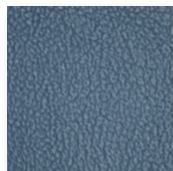
SAV-409 Warm Taupe



SAV-9722 Desert Sage

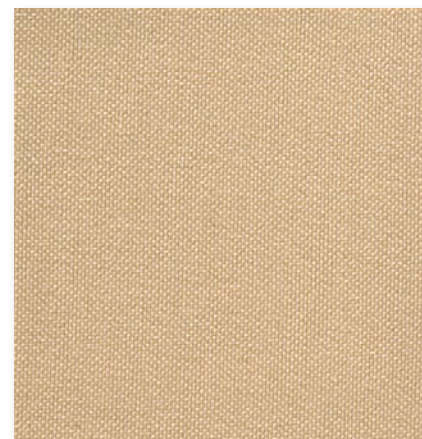


SAV-9715 Eucalyptus



SAV-9764 Steel Grey

Silvertex



STX-8808 Champagne



STX-8809 Taupe



STX-8818 Sage

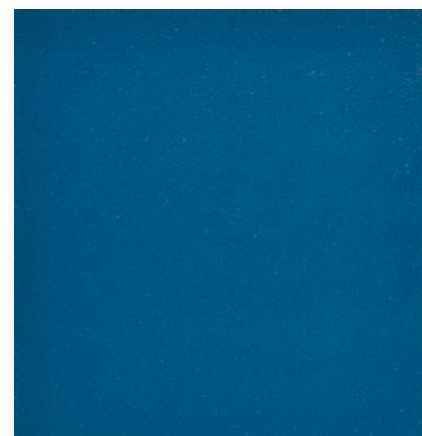


STX-8801 Marine Blue

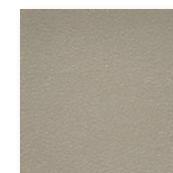


STX-8805 Jet

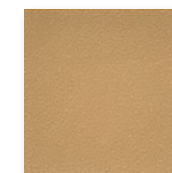
Silvertex



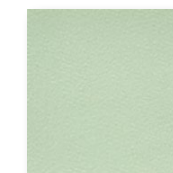
GUA-1323 Moat



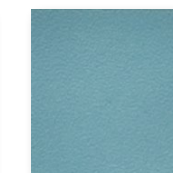
GUA-1305 Convoy



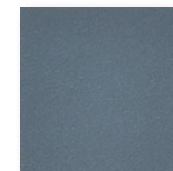
GUA-1311 Fence



GUA-1315 Sentinel



GUA-1318 Steel

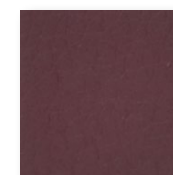


GUA-1325 Armor

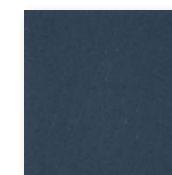
Dolce



DOL-6705 Sand



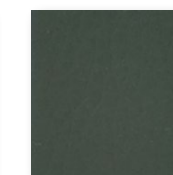
DOL-6714 Burgundy



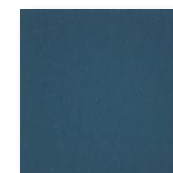
DOL-6725 Indigo



DOL-6727 Meteor



DOL-6717 Moss



DOL-6724 Jet



GF HEALTH PRODUCTS, INC.

THE STANDARD AND SILVERGUARD COLLECTION

Composition

	Dolce	Guardian	Patriot Plus	Renaissance	Savoy	Silvertex
100% Polyester Hi-Loft™ Backing				•	•	•
Polyester/ Cottone Backing			•			
Ultra Hi-Loft™ Polyester Backing		•				
100% Rayon	•					
Weight (oz.)	15	30	34	32	32	30
Roll Size (yd.)	30	30	30	30	30	30
Roll Width (in.)	54	54	54	54	54	54

Codes*

	DOL	GUA	PAT	REN	SAV	STX
Boston Fire Code (Test BFD IX-1)		•	•	•	•	•
CA Tech 117, Section E	•	•	•	•	•	•
CA Tech Bulletin 133			•			
FAR 25.853 (A) Appendix F Part 1(a)(1)(ii)		•	•	•	•	•
Federal St. 191A M 5903.1		•	•	•	•	•
FMVSS 302	•	•	•	•	•	•
IMO FTP 2010 Code MSC.307(88), Part 8, 3.1 & 3.2	•	•	•	•	•	•
NFPA 260 - Class I	•	•	•	•	•	•
Port Authorities of NY & NJ		•	•	•	•	•
UFAC -Class I	•	•	•	•	•	•

Finishes and Treatments



	DOL	GUA	PAT	REN	SAV	STX
Antimicrobial Protection		•	•	•	•	•
UV Stabilized Pigments (1,000 hrs)		•	•	•	•	•
Abrasion - CFFA-1, ASTM D-4157-02	400k	100k	200k	200k	200k	100k
Wyzenbeek Cotton Duck	Wire Screen	#10	#8	#10	#10	#10
Cold Crack	-10°F	-20°F	-20°F	-20°F	-20°F	-10°F

Applications

	DOL	GUA	PAT	REN	SAV	STX
Corporate Interiors Restaurant Hotel	•	•	•	•	•	•
Casino Sunroom Residential	•	•	•	•	•	•
Healthcare Marine Interior RV Auto	•	•	•	•	•	•



*This term and any corresponding data refer to the typical performance in the specific tests indicated and should not be construed to imply the behavior of this or any other material under actual fire conditions.

Care and Cleaning Guide**

Treat stains with one of the following steps:

step 1	eye shadow, mascara, grease, black felt tip pen, crayon, chocolate, and suntan lotion
step 2	red lipstick
step 3	blood, urine, feces, oil base paint, tar and asphalt
steps 4 & 5	all other tough stains

Step 1: Remove excess spill with a damp cloth. Clean with a 1:1 mix of Ivory® liquid soap and water. Next, rinse with clean water and dry.

Step 2: Use a straight application of concentrated cleaners such as Formula 409® or Fantastik® spray cleaner. Wipe with a clean cloth, rinse with water, and dry.

Step 3: Use a 1:1 mix of ammonia and water, or a 1:4 mix of bleach and water. Rinse with clean water and dry.

Step 4: Use a straight application of naphtha (lighter fluid). Rinse thoroughly with clean water and pat surface dry.

Step 5: Use a 1:1 mix of isopropyl alcohol and water. If the stain persists, use straight alcohol. Rinse thoroughly with clean water and pat dry.

Note: For cleaning that requires step 4 or 5, use a soft cotton cloth saturated with the cleaning material and rub the stain in circles 10 times. Pat dry with another soft cotton cloth and check the results.

The information published in this care guide refers to the performance of PermaBlok® products in specific tests conducted under laboratory conditions. Results may vary under actual conditions.

This information is not a guarantee and does not relieve the user from the responsibility of the proper and safe use of the product and all cleaning agents. The use of certain agents can be harmful to the surface appearance and lifespan of vinyl. Spradling, its agents, and assigns assume no responsibility resulting from the use of such cleaning agents to the vinyl.

Certain clothing and accessory dyes (such as those used on denim jeans) may migrate to lighter colors. This phenomenon is increased by humidity and temperature and is irreversible. Spradling International, Inc. will not assume responsibility for dye transfer caused by external contaminants. Please check compatibility when using this product in combination with painted or varnished surfaces.

Formula 409® is a registered trademark of the Clorox Company.
 Fantastik® is a trademark of DowBrands, Inc.®
 Trademark of the Dow Chemical Co.
 Ivory® is a trademark of Procter and Gamble.
 PermaBlok® is a trademark of Spradling International, Inc.
 PBG+® is a trademark of Spradling International, Inc.
 Silverguard® is a trademark of Spradling International, Inc.

© 2014 Spradling International, Inc.®

Please check compatibility when using this product in combination with painted or varnished surfaces.

**Care and Cleaning Guide excludes Dolce and Guardian.

Please visit spradlingvinyl.com/research_center for the Polyurethane Fabric Cleaning Guide and the PBG+ Cleaning Guide.



GF Health Products, Inc.

2935 Northeast Parkway
 Atlanta, GA 30360
 770.368.4700 | www.grahamfield.com